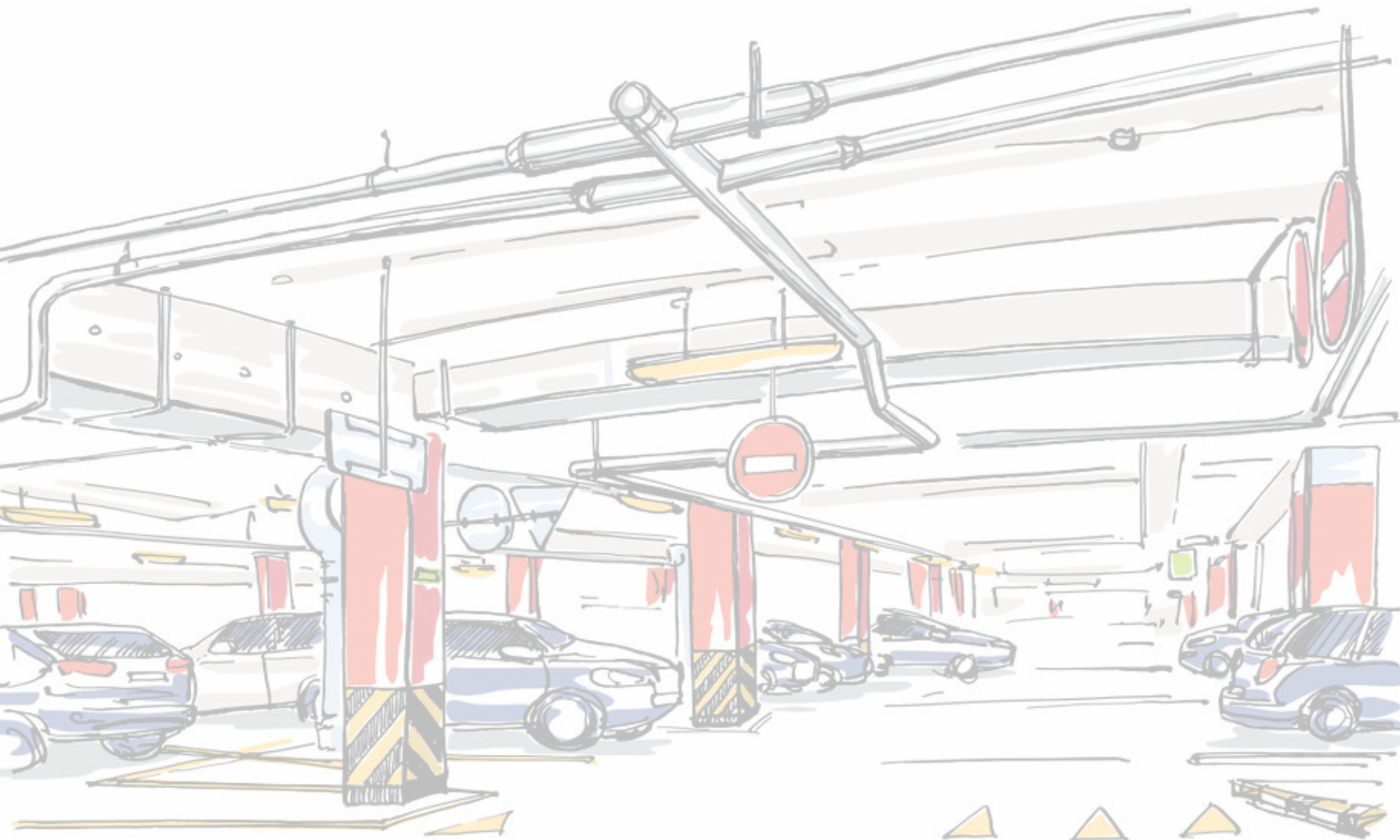




SPARK

Smart Parking Device



Carbon footprint... Is human imprint in danger?

Did you know Transportation alone contributes to 30% of overall carbon emissions globally of which passenger vehicles is the largest contributor with over 40% of it? With the rapid growth in transport industry since 1990 with large companies evolving in manufacturing of passenger vehicles, it had evidently become one of the largest contributing source to the family of carbon footprint. Today carbon footprint is more focused than any other footprints since they measure emissions of gases that change the climate in the atmosphere.

Keeping this in mind, Satyamev Infotech Pvt. Ltd. has taken a leap ahead to build a smart software-based application that not only offers scalable feature-rich parking management system but also helps abundantly in preserving various resources with reduced carbon emission involved due to passenger vehicle transportation. Satyamev is committed to build long-term parking solutions for large set-ups like corporates, hospitals, malls, etc. where it is essential to manage parking traffic swiftly and avoid chaos.

*Getting a quick **parking spot** is a blessing in disguise*

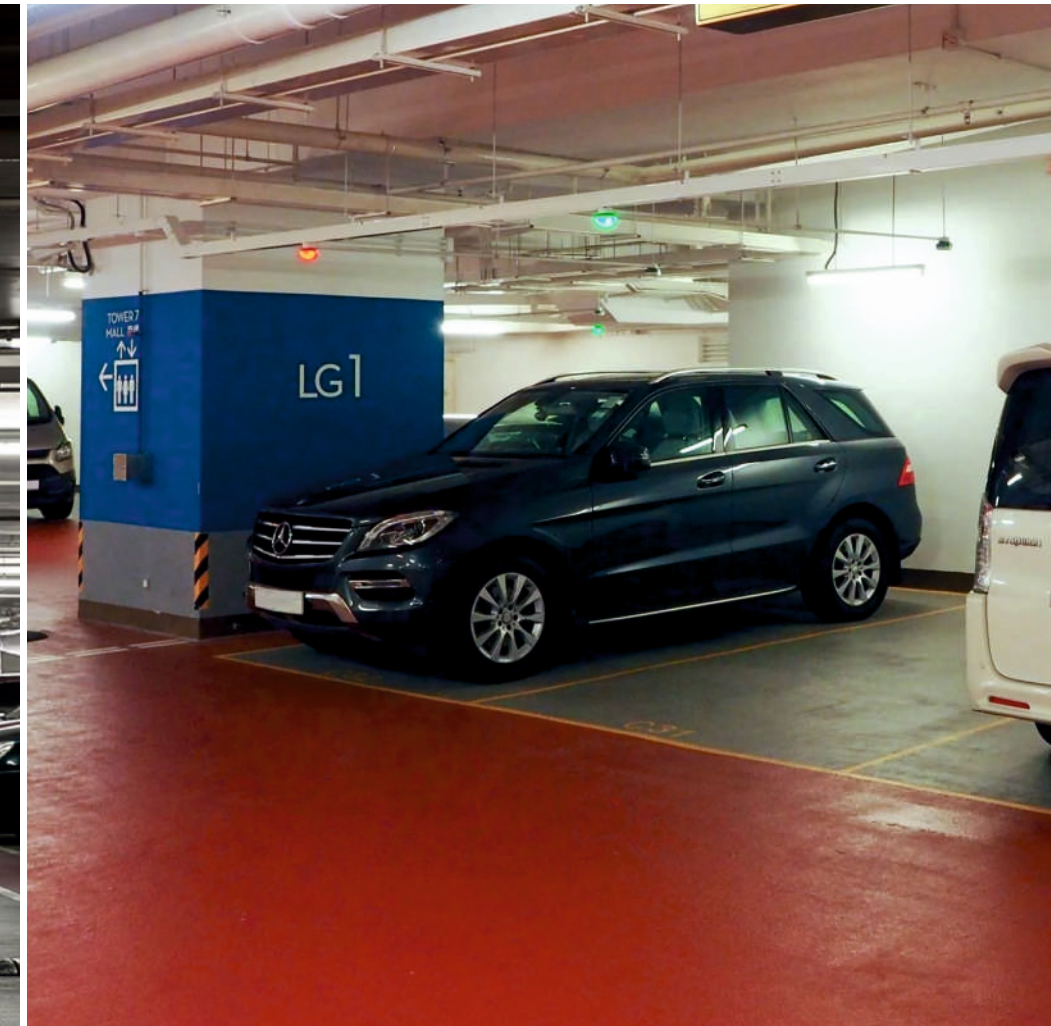
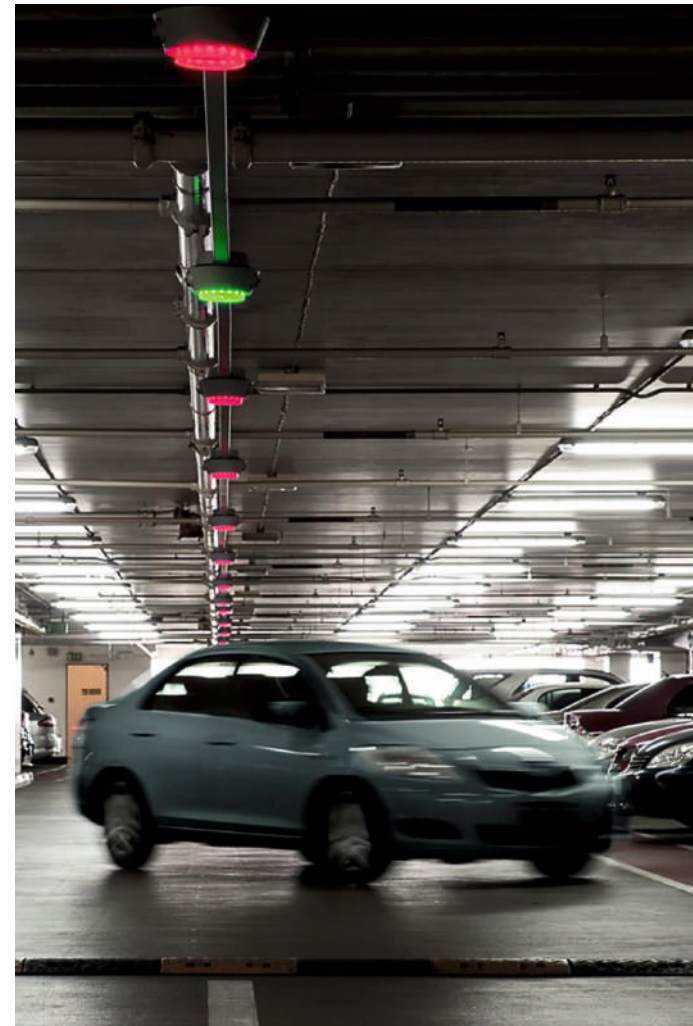


Solution - Spark (Smart Parking Device)

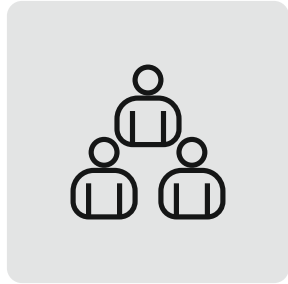
Spark is a web-based parking management application specially designed to control and reduces the rapid increasing carbon emission from passenger vehicles. This application designed by Satyamev Infotech Pvt. Ltd.

Features :-

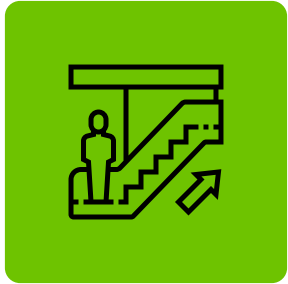
- Improved efficiencies in **time management** of parking lots especially in large set-ups during peak hours
- Optimum **utilization of fuel** while tracking vacant space for parking
- Provide **accurate** detailing of parking availability as well as the spot for convenience
- Less **usage of manpower** and rather automates managing the parking directions
- Improved **power consumption** with precise details on parking information



Usages of Spark
in various areas



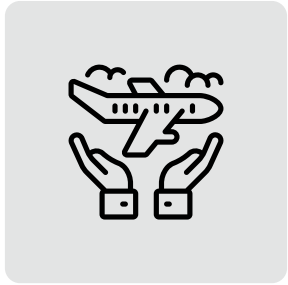
Large Corporate Areas



Malls



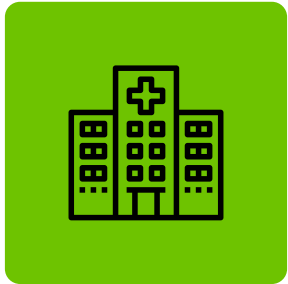
Multiplex



Airports



Dedicated Public
Private Parking Areas



Large Hospitals



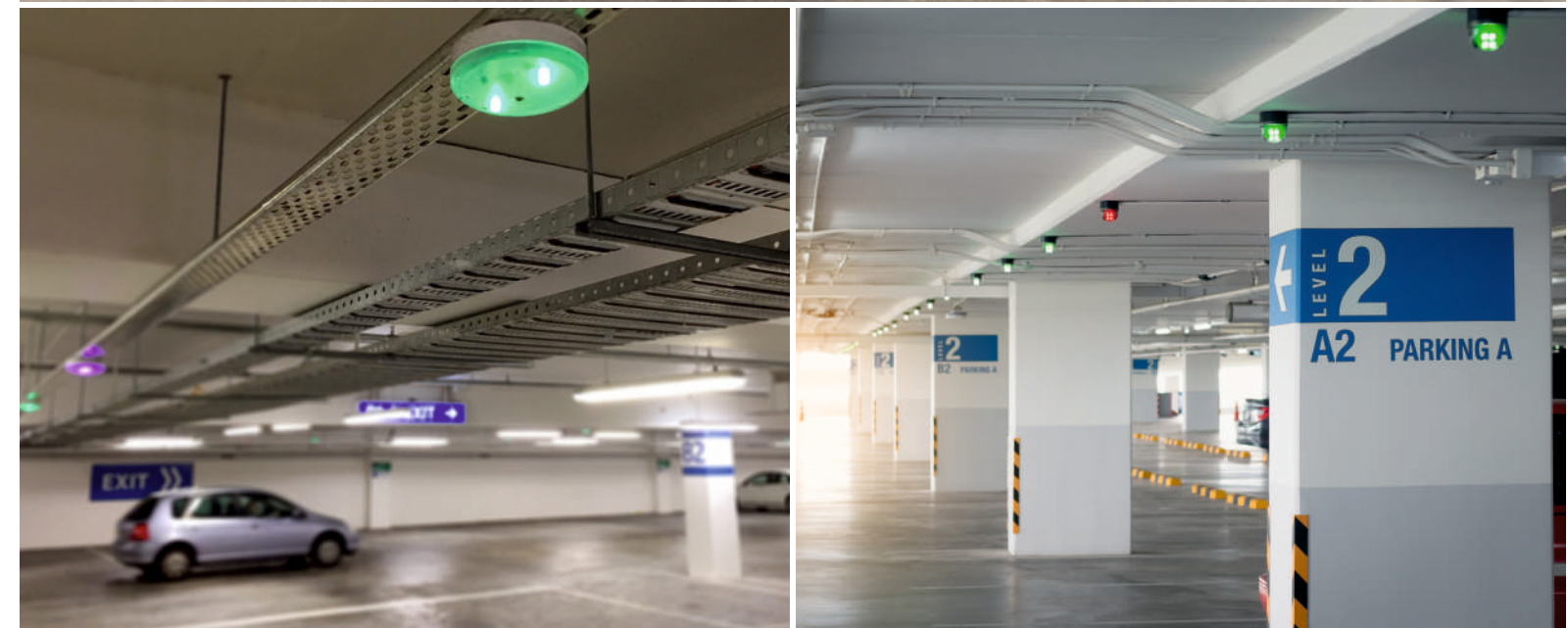
Multiple Corporate
Buildings



Benefits of Smart Parking System

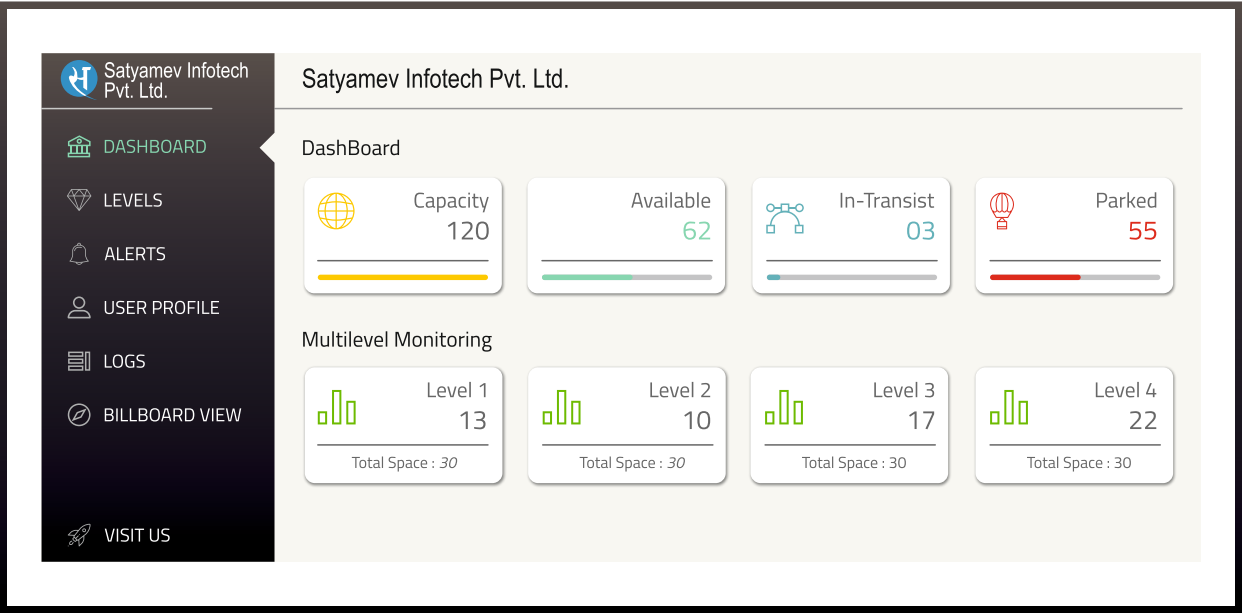
With our complete solution, there are numerous benefits with the usage of Smart Parking System by Satyamev Infotech Pvt. Ltd. :-

- **Fully automated** - A one of its kind parking management system that provides a better outlook for companies in today's technology driven environment by making it completely automated and free from manual interventions.
- **User-friendly solution** - This smart parking system is a design we envisaged exclusively keeping in mind the end users who would need the convenience in operating such systems.
- **Wireless enabled communication** - This is one of the crucial benefit of our smart parking system that defines the potential confusion when it comes to wired technology. We proclaim to enable wireless technology in the device management.
- **Central GUI monitoring** - The system is designed and developed hassle-free with an arrangement to manage the monitoring using GUI (Graphical User Interface) centrally.
- **Flow of traffic** - The devices are inter-connected to provide a consolidated view of end to end traffic movement for parking done in multi-level set-ups.
- **Investment in long term** - Our devices are a one-time investment with an output of long term services supported by top quality. Think ahead if you wish to reap benefits in a long run.
- **Cost-effective** - An assured low maintenance model for companies to run parking lots at the most optimum costs. It's a value for money deal to deploy this smart parking system.
- **Simple installation process** - It can't be easier than this for companies to implement the device system with the simplest installation approach. We guarantee a seamless and error-free one-time activity to install our devices.
- **Low maintenance system** - Our promise is to deliver systems and services that are secured with low maintenance efforts.

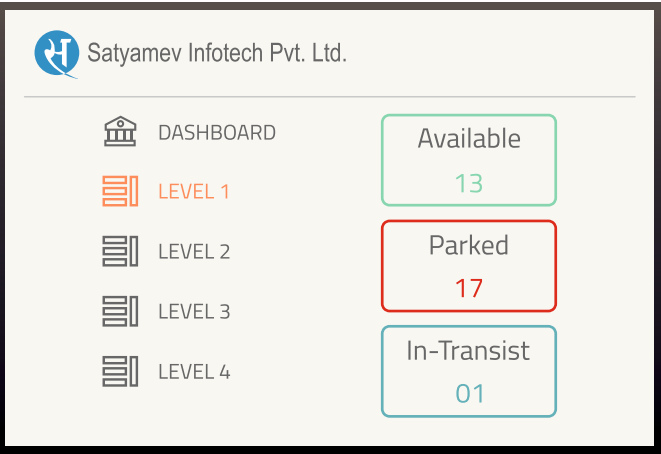


Process of Work: Standard Operating Process

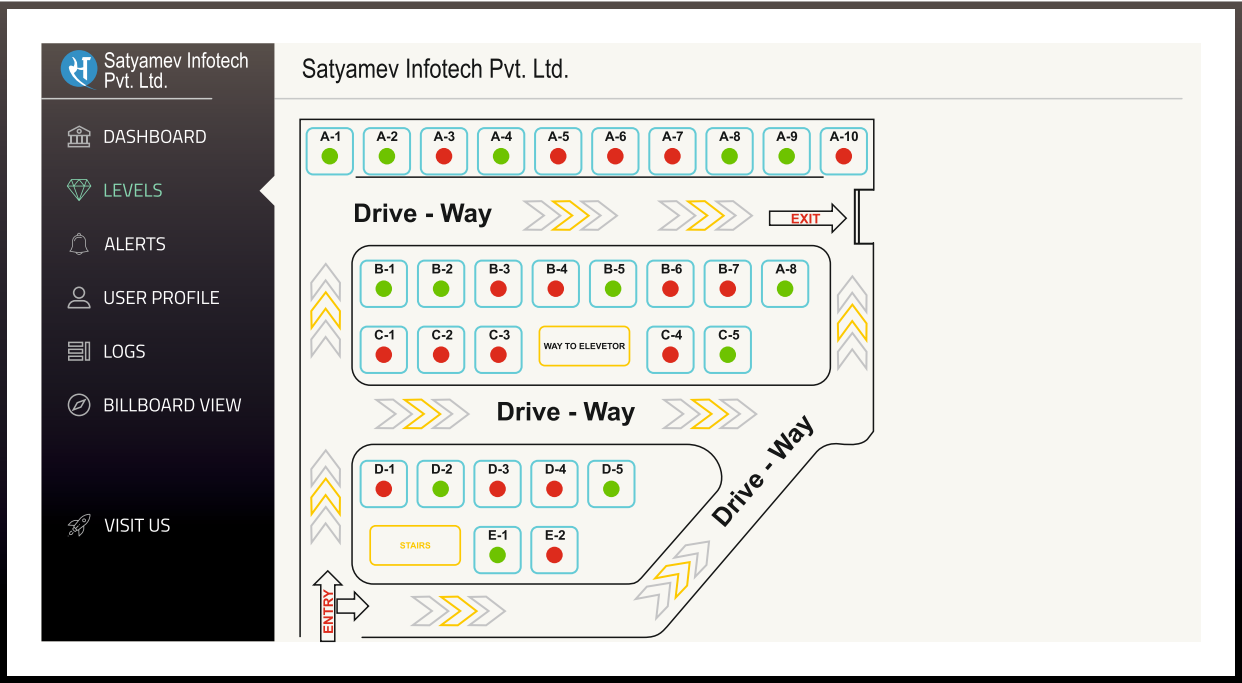
Step 1 - An organized dashboard system installed at arrival of parking entrance provides one-view of complete level-wise details right from capacity, vacancy and in-transit number of vehicles to the customers.



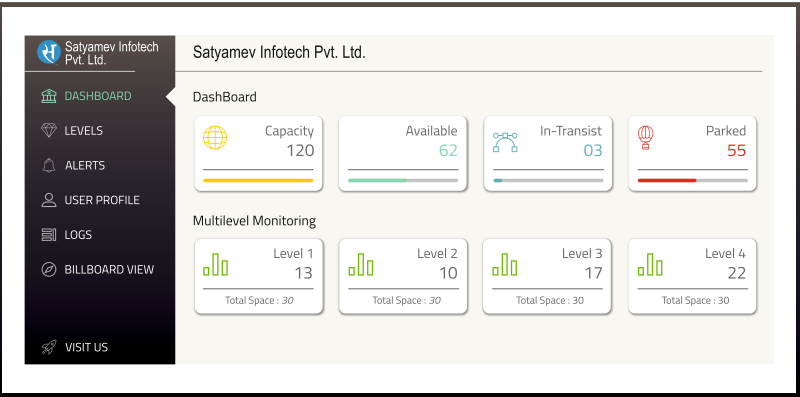
Step 2 - Looking at availability from dashboard, customer can choose their choice of level they wish to park and drive towards the entry of the level where each level has a different billboards that are installed to provide a complete map view of the parking slots.



Step 3 - The system is integrated and designed in such a way that the occupancy status of selected parking slot automatically changes once the customer has parked the vehicle in that spot. Essentially all billboard systems will display the accurate status of the parking slot.



Step 4 - The exit process is also well defined where the status of parking slot automatically turns in-transit when a vehicle is removed from the parking slot and till the time it exits the main parking entrance. Once exited from main entrance, the status further turns into empty automatically. This is how the cyclic automated systems is designed and integrated to manage the Smart parking system.



Smart Parking Management Device

Satyamev Infotech takes endeavor to launch a most efficient and user-friendly smart parking management device that is specifically designed to automate and organize large parking facilities which in turn help towards a larger cause of reducing carbon emission from passenger vehicles. The motive is to leverage our smart technology experience over the years in order to provide robust and easy to use advanced parking management software for large set-ups as the best parking solution with multiple benefits.

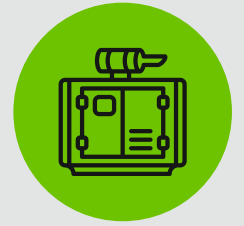
Feature Spotlight

Digital Signal Processing (DSP) for precise performance



More precise and efficient transmission of signals through fine tuning of sensing and communication.

Temperature Control Device



This device can withstand temperatures as high as 70°

Wireless Update



With firmware technology, no need of internet to update the device

Easy Installation



With simple screw fitting process, it can be mounted

Wireless Device Management



With no extra wiring except power cord, it offers clutter free performance

Long lasting performance with durability



Since the enclosure is made of high quality polycarbonate, it is safe from any harsh impact ensuring flawless performance

Quick sensing. Swift Process.



Thanks to its quick detection technology, it takes minimum time to connect with server and start the parking process.

You are parked. Safely.



Quick and easy configuration followed by simple plugging to initiate the device. It's as simple as that.

	Tech Specification  <p>Operating Temperature -40°C +70°C Supply voltage -220v Device working range -0.2 -4m Communication over WiFi Indication via indicator module Mounting method screws Device Colour light grey</p>	
System Requirements  <p>Windows 8 (32 -bit or 64 -bit), Windows 10, Windows Server 2012 and up</p>	Output Compatiblty  <p>Windows, Mac OS, Linux, Android, IOS and it goes on</p>	Product Dimension  <p>114 x 114 x 57 mm</p>
Product Specification  <p>Spark AC-01 parking management device</p>	Warranty  <p>1 - Year limited hardware</p>	



We are an established company that had been into technological industry since inception which was in the year of 2008. Our focus has been on providing best quality services in hardware and software solutions to our customers with innovation and environment friendly approach. That is when the idea of improving carbon footprint came into consideration to develop a solution for the transportation industry which is growing at a fast pace. With experience, our vision is to further develop advanced software solutions as well as futuristic gadgets that will help improve the overall human ecosystem and make world a better place to live in.



Satyamev InfoTech Pvt Ltd

E.: sales@satyamev.com

P.: 079-40027479

M.: +91-99980 24944